

precision for professionals



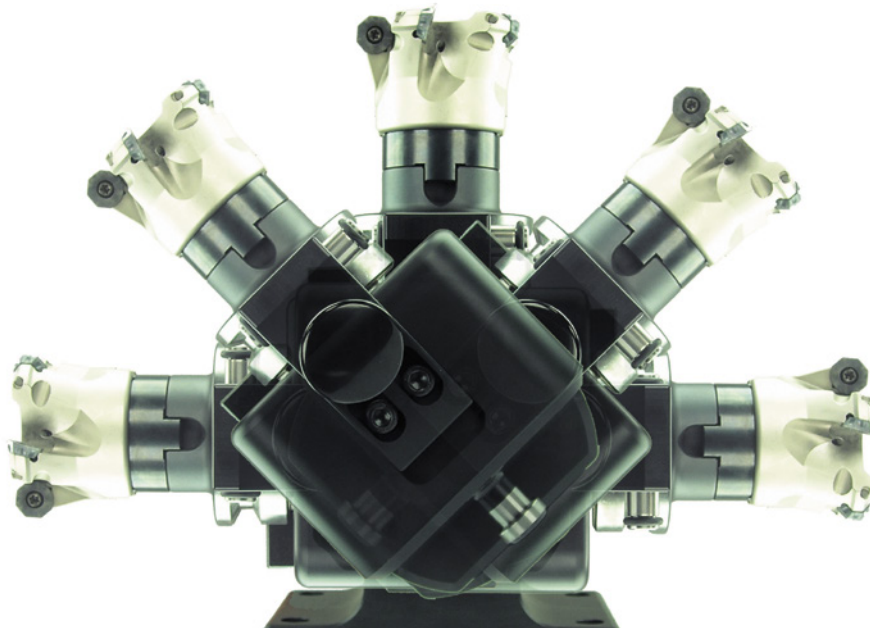
alfa-clamp

Sensationally simply – simply sensationally

The new tool assembly device

- Secure tool assembling
- minimum locking force needed
- Quick-change function for different taper interfaces - w/o additional tooling
- Accident free assembling of cutting tools
- Spring-loaded locking pin
- Mechanical security pin
- Better tool clamping thanks to optimum ergonomics
- Replaceable brass tool pots protect taper surface
- Required space 140 x 100 mm





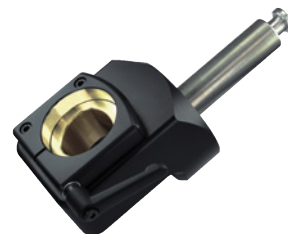
200090 **alfa-clamp 90**
without toolholder
4x90° indexable



200045 **alfa-clamp 45**
without toolholder
8x45° indexable



Toolholder SK
(DIN / MAS-BT / CAT)
200130 SK / ISO 30
200140 SK / ISO 40
200150 SK / ISO 50



Toolholder Capto
200303 Capto - C3
200304 Capto - C4
200305 Capto - C5
200306 Capto - C6
200308 Capto - C8



Toolholder HSK - A (DIN 69893/1)
200225 HSK - A 25
200232 HSK - A 32
200240 HSK - A 40
200250 HSK - A 50
200263 HSK - A 63
200280 HSK - A 80
200210 HSK - A 100



Toolholder VDI (DIN 69880)
200516 VDI 16
200520 VDI 20
200525 VDI 25
200530 VDI 30
200540 VDI 40
200550 VDI 50

Toolholder KM
Kennametal
200463 KM 63

We reserve all rights to make technical improvements!

